

**24b Commercial Street, Pontypridd, CF38 2DB**  
**£800 Per Calendar Month**

**\*\* Available Now \*\* Refurbished Maisonette \*\* Ideal Location For Amenities \*\***

Located within the main shopping street in the village of Beddau - with many shops, schools and amenities to hand. A light and airy, maisonette, very well presented and comprising large open plan lounge/kitchen with oven & hob, ground floor wc, spacious double bedroom and shower room.

Highly recommended.

NB The property is offered unfurnished, but the furniture is available for any prospective tenant to purchase, if required.

## Communal Entrance

### Open Plan Lounge/Kitchen 16'6" x 9'6" (5.04 x 2.91)



## Cloaks/WC

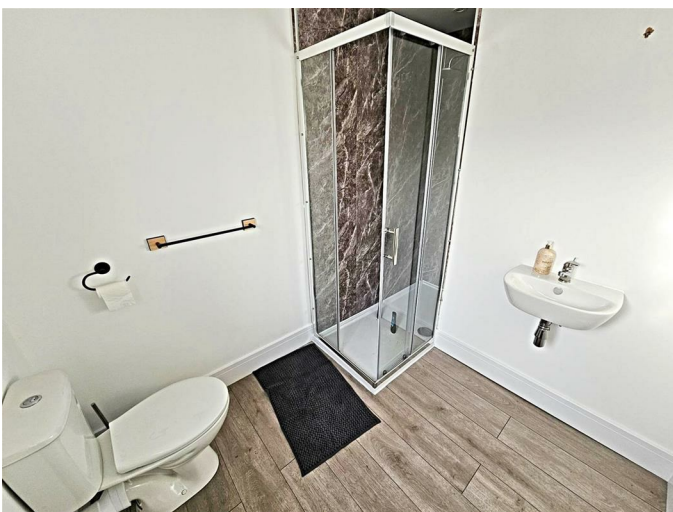


## First Floor

### Bedroom 18'2" x 9'6" (5.54 x 2.91)



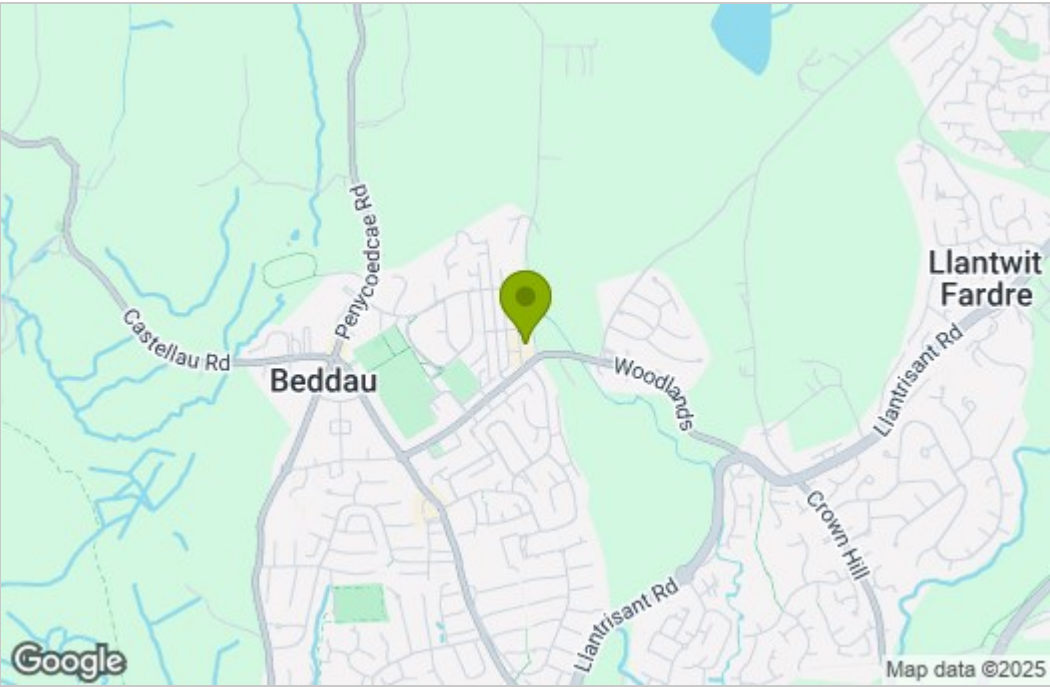
## Shower Room



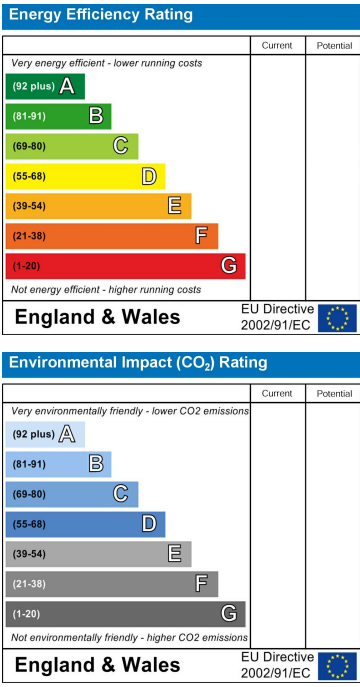


Floor Plan

Area Map



Energy Efficiency Graph



These particulars, whilst believed to be accurate are set out as a general outline only for guidance and do not constitute any part of an offer or contract. Intending purchasers should not rely on them as statements of representation of fact, but must satisfy themselves by inspection or otherwise as to their accuracy. No person in this firms employment has the authority to make or give any representation or warranty in respect of the property.